

WELCOME TO THE NORWEGIAN SCENIC ROUTE RONDANE 2022



Nasjonale turistveger
Norwegian Scenic Routes



Welcome to the Norwegian Scenic Route Rondane

Norway has 18 Norwegian Scenic Routes. This Travel Guide will help you plan where to stay and what to do and experience along the Norwegian Scenic Route Rondane. All presented firms in this guide are located along the Norwegian Scenic Route and its supply roads from Ringebu, Atna, Hjerkind and Alvdal. Take a look at our website rondanevegen.no and our facebook site for more information. We wish you a warm welcome to our beautiful area.



OLAVSROSA

Some of the firms have received St Olav's Rose, the Hallmark of Norwegian Heritage. Read more about this at olavsrosa.no



RONDANEVEGEN.NO



HOW TO FIND US FROM THE SOUTH

Gateway Ringebu: When you have driven on the E6 highway from Oslo, the Norwegian Scenic Route Rondane can start from Ringebu. From there you can drive over the mountains, Venabygdsfjellet, and down where you can choose to drive towards Hjerkind in the west and Alvdal in the east.

Gateway Atna: If you have driven on route no. 3 from Elverum, you can start from Atna and drive north-westwards. Again, you can choose whether to drive towards Hjerkind or Alvdal, or south over Venabygdsfjellet.

FROM THE NORTH

Gateway Hjerkind: If you are starting from Dovrefjell and west, Hjerkind is an excellent gateway for your trip along the Rondanevegen. From the mountain plateau on Dovrefjell, the route leads to Follidal. Continue to Alvdal or drive south against Enden in Solli. There you can choose to drive further on to Atna or over Venabygdsfjellet towards Ringebu.

Gateway Alvdal: If you arrive in Alvdal from the north-east, maybe from Røros, you will turn against Follidal, and then continue eastwards against Hjerkind and Dovrefjell, or turn south towards Enden in Solli. Choose the road towards Atna or over Venabygdsfjellet to Ringebu.

Summertime: When arriving Dovre in the summer, you can also choose to drive through the summer farm valley Grimsdalen on your way against Follidal.

TIPS TO HELP YOU PLAN YOUR TRIP

The maps in this guide will provide an overview and the location of members in Rondanevegen. We will tell you about the Norwegian Scenic Route Rondane, Rondane and Dovre National Parks, and municipalities you'll drive through. All prices are quoted in Norwegian kroner.

- We have blue, purple, green and light blue banners in this book.
- **Blue banners - activities/culture**
- **Purple banners - attractions/viewpoints**
- **Green banners - trails**
- **Light blue banners - accommodation**

DISTANCES	Oslo-Follidal	320 km	Follidal-Ringebu	85 km
	Trondheim-Follidal	200 km	Follidal-Hjerkind	29 km
	Ålesund-Follidal	280 km	Follidal-Alvdal	43 km
	Lillehammer-Follidal	142 km	Follidal-Atna	80 km
	Røros-Follidal	120 km	Follidal-Dombås	60 km

RAILWAY/BUS	RAILWAY STATIONS	TIMETABLES/BUS
	Ringebu, Atna, Dombås, Hjerkind og Alvdal.	Entur.no
	For ruteopplysninger: Vy.no eller tlf +47 61 05 19 10	



© Rondane River Lodge

© Rondanevegen

© Rondane River Lodge

© Rondane River Lodge

© Hilde F. Tveråen

© Kirsti Vik Hjerkind



© Roger Ellingsen / Statens vegvesen

Norwegian Scenic Route Rondane

Norwegian Scenic Route Rondane is one of 18 selected road sections in Norway. It runs from Muen and Solli Church to Folldal. The road follows the east side of Rondane National Park, and switches between cultural landscape and a majestic mountain massif.

The drive along the Blue Mountains is a voyage of discovery in nature, culture and geology. By Atnsjøen, you can experience the powerful view from Sohlbergplassen. Go for a walk to Fallfossen and The Old Grimsa Bridge or take a break at Strømbu Rest Area.

The Rest Area is the starting point for hikes from the east, and for mountain hikes in Alvdal Vestfjell and Breisjøseter Tourist Cabin. In Folldal, you can visit the old Mine society and enjoy the panorama from the viewpoint.

Nasjoaleturistveger.no



Nasjonale turistveger
Norwegian Scenic Routes

Rondane and Dovre

Rondane is the oldest National Park in Norway, created in 1962 and expanded in 2003. The glaciers after the last Ice Age, have shown great impression in Rondane. The prints are seen as round and valley pits in the mountainsides and over these large bottoms are high hills. The area is a varied and popular hiking area with ten peaks 2000 meters above sea level. The highest mountain is Rondslettet, with its 2178 meters above sea level.

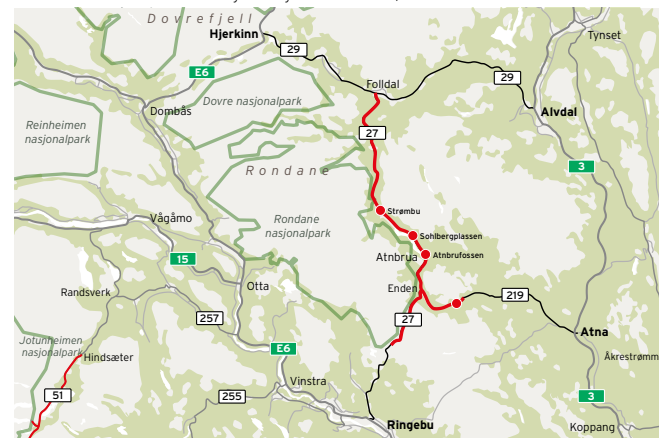
Dovre National Park is a mountain area with little snow, with bedrock that easily crumbles. This means that the area has a very rich plant life - you will find almost all Norwegian mountain plants in the area. The first users of the area were hunters who followed the flock of wildlife nearly 6000 years

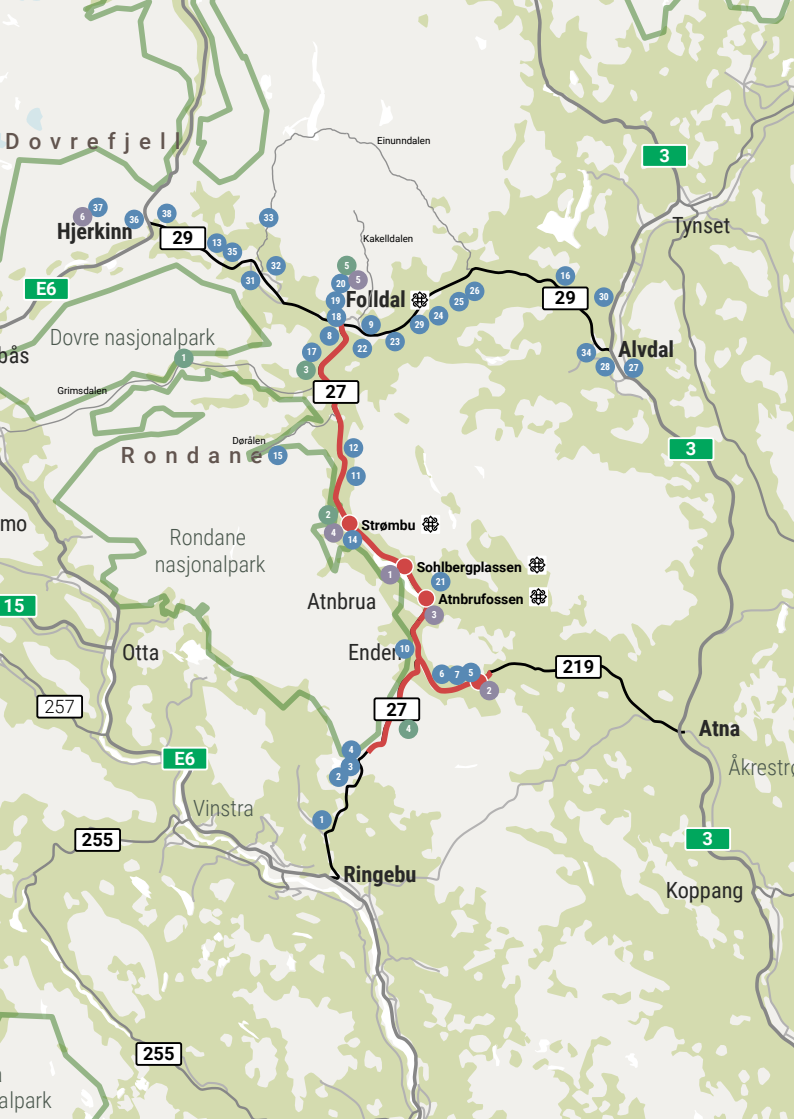


**Rondane og Dovre
nasjonalparker**

ago. Here you will find a large catching system, padded and dug-out catch pits where the hunter could wait to hide the swap.

The cultural landscape in Rondane and Dovre is created by people's use of natural resources in the mountains for hundreds of years. In the spring people move to the mountains with livestock and utilized grazing in the mountains throughout the summer. Grimsdalen is a lush and green valley that separates Rondane and Dovre National Parks, and this is the summertime road.





ACTIVITIES/CULTURE



ATTRACTIONS/VIEWPOINTS



TRAILS



Activities/culture

- 1 Trabelia Hyttegrend & Camping
- 2 Lundes og Lundegrenda
- 3 Venabu Fjellhotell og hytter
- 4 Spidsbergseter Resort Rondane
- 5 Solliaysteriet
- 6 Øverdalssetra
- 7 Solliia Fjellstyre
- 8 Det gule retrohuset - Kvile
- 9 Fjellguide Inger
- 10 Rondane River Lodge
- 11 Berg Gård
- 12 Stadsbuøyen hytteutleie
- 13 Galleri Slåen
- 14 Strømbu rasteplass
- 15 Nedre Dørlåseter Turisthytte
- 16 Gaiaenter
- 17 Fallet Nordre
- 18 Folldal Sport
- 19 Joker Folldal
- 20 Folldal Gruver
- 21 Solliia Krigshistoriske Museum
- 22 Folldal Sykkelmekka
- 23 Svenssplassen Gårdssøm
- 24 Kvebergsøya Gard
- 25 Rondane Gardsmat
- 26 Grimsbu Ull og Natur
- 27 Huset Aukrust
- 28 Frich's Hotell og Spiseri Alvdal
- 29 Brendryen Camping
- 30 Søberg Gård
- 31 Fjellsyn Camping
- 32 Galleri Snøhetta
- 33 Sætervegen Setalsjøla-Dalholen
- 34 Gjellen Bru Camping
- 35 Kvistli Islandshester
- 36 Visitor Centre Wild Reindeer / Fjellportalen
- 37 Visitor Centre Wild Reindeer / viewpoint SNØHETTA
- 38 Hjerkind Fjellstue og Fjellridning

Attractions/viewpoints

- 1 Sohlbergplassen
- 2 Solliia Church
- 3 Atnbrufossen Vannbruksmuseum og Fossehuset
- 4 Strømbu Rest Area
- 5 Viewpoint at Folldal Gruver
- 6 viewpoint SNØHETTA

Trails

- 1 Three trails in Grimsdalen
- 2 Trails at Strømbu Rest Area
- 3 Fallet and Grimsdalsbommen
- 4 Muen at Venabygdسفjellet
- 5 Four trails at Folldal Gruver





ØVERDALSSETRA

Øverdalssetra is a summer mountain farm situated together with several other old summer mountain farms in Solliia at an altitude of 900 m above sea level. The good cultural landscape gives the goats and the products we produce that little extra. In 2013 we were the proud winners of the Norwegian Food and Culture Prize. We take care of the relationship between local food and culture.

We serve sour cream waffles, tea, coffee, sour cream porridge and cured meats. We also sell products from the local vicarage, Solliia Prestegård, such as smoked goat sausage, cold-smoked leg of goat and traditional local baking.



© H.J. van Ommeren

ØVERDALSSETRA

Øverdalssetervegen 93, 2477 Solliia

+47 950 88 465 (Ellen Marie)
+47 909 69 518 (Hans)
ellmar@online.no (Ellen Marie)
hans.bondal@gmail.com (Hans)



We can arrange events in the summer mountain farm's old stone barn (70 m²). Please contact us for a good offer.

CONCERT 21 JULY 19.30PM

Erik Harstad plays! Please follow us on Facebook for more information.

OPENING HOURS 2022

The café opens 1 July at 12 noon and is open daily from 12 noon to 6pm. Last opening day is 14 August.

Welcome to unforgettable summer mountain farm visits!



Erik Harstad



© H.J. van Ommeren



RONDANE GJESTEGÅRD RONDANE RIVER LODGE

Rondane River Lodge has a cosy restaurant seating up to 40 guests.

For us, homemade food is more than a slogan - it's a lifestyle!

We serve homemade three-course dinner every evening at 7pm. All the dishes are based on local ingredients including moose, lamb, Arctic char and mountain trout, as well as wild mushrooms and berries picked in the surrounding forest. Our chef often makes small twists to traditional recipes while retaining the dish's original identity. Don't forget our tasty wines, local beers and organic juices.

We wish you a warm welcome regardless of whether you are staying at the hotel, in one of



© Rondane River Lodge



© Britt Op De Beeck / Rondane River Lodge

the cabins or just visiting the area. Check the weekly menu on our website and feel free to reserve a table before 2pm.

Do you like waffles? Our Vaffelgård summer café is open daily during the peak summer season from 12 noon to 4pm. We serve fresh Norwegian and Belgian waffles with various toppings, including both sweet and salty options.

For information about accommodation at our lodge, please see page 45.

Welcome to our restaurant!



© Laura Leemans / Rondane River Lodge

RONDANE RIVER LODGE

Rondeveien 34, 2477 Solliia

+47 62 46 37 20 / +47 959 60 360
info@rondaneriverlodge.no
Rondaneriverlodge.no





HJERKINN FJELLSTUE OG FJELLRIDNING

We ride across mountain plains, climb mountain peaks overlooking the Rondane and Dovre Mountains, cross rivers and follow peaceful trails through the birch forest. As the only one in the world we offer musk ox safari from the horseback every Thursday and Saturday!

We have trips for beginners and experienced riders, adults and children (minimum age 12, or 10 with a parent). Every day we divide the participants into smaller groups based on how much experience each have. You get to groom and saddle your horse yourself, and to try both ambling gait, trot and canter.

We use islandic horses and the upper weight limit for attending is therefore 95 kg.

Choose between daytrips or stay for several days.

We offer horseback riding every day except Mondays, from 11 June to 28 August and weekends until 2 October. Bring lunch and beverage every day. Helm and saddle bags are included.

Starting point and time: 9.30am at Hjerkin Fjellstue every day. Saddling 1 hour + 5 hours horseback riding.

HJERKINN FJELLSTUE OG FJELLRIDNING

Kvitdalsveien 20, 2661 Hjerkin

+47 940 50 429
fjellstua@hjerkin.no
hjerkin.no



Price: One day costs NOK 1260 per person, two days or more costs 1134 per person per day. The musk ox safari on Thursdays and Saturdays costs NOK 1550 per person.

Booking: fjellstua@hjerkin.no or phone +47 940 50 429.

ACCOMMODATION

We have both hotel rooms and apartments for rent, also for those who do not participate in horseback riding. Look at our website for more information.



© Leena Henningsen



© Leena Henningsen



SOLLIAYSTERIET

Welcome to the cheese factory Solliaysteriet! We sell brown cheese, organic white goat's cheese, organic cream cheeses (natural, garlic, capsicum and mountain herb flavoured), organic ricotta and caramel pudding.

THE PROCESS BEHIND THE WHITE CHEESE

Our organic white cheeses can be traced back to the birth of the kids and the suckling. Baby goats and kids that suckle become resilient and healthy. In the winter, the goats are fed with hay from our flowery meadows, which are fertilised with matured livestock manure.

In the summer, they are at the summer pastures and graze in the mountains above Øverdalssetra. In the autumn, they come down to the farm again and graze in our flowery meadows.

Our cheese making logs show the time the unpasteurised milk was made into cheese and consequently whether the goats ate hay, grazed in the flowery meadows or up in the mountains. Our white cheese is almost white. The colour comes from the goat whey protein, which is different from that of cows, and many people with lactose intolerance can eat our cheese.

SOLLIAYSTERIET

Solliaveien 817, 2477 Sollija

+47 468 91 445 / +47 950 88 465
vaalerstein@gmail.com
Solliaysteriet.no



THE PROCESS BEHIND THE BROWN CHEESE

The brown cheese can also be traced back in the same way: How were the goats fed in the barn and when did they come out into the meadow?

The traditional brown cheese, which originally comes from the Østerdalen valley, has always been an important part of people's daily fare and packed lunches. The brown cheese we produce has a round and slightly distinctive taste. It's a caramelised cheese that melts on the tongue.

OPENING HOURS SHOP AND CAFÉ 2022

Daily from 12 noon to 4pm in the peak summer season. If you want to contact us outside opening hours, please feel free to call us!



© Tanja Vaaler



© Tanja Vaaler



GALLERI SLÅEN

Galleri Slåen - an exciting high mountain gallery with many types of arts and crafts, spread over two floors of a traditional, listed storehouse dating from 1750.

This is a beautiful natural pearl, 900 metres above sea level with the majestic mountain Snøhetta as the nearest neighbour. Peaceful, beautiful nature goes hand in hand with beautiful art. Products on offer include ceramics, glass, sculpture, jewellery, graphics, paintings, cards, knitwear, textiles, handmade soaps, chocolate confectionary and organic ice cream. One of the exhibitors this year is Ståle Blæsterdalen, with his distinctive art. Together, all these elements give you a happy and humorous art experience.

You can find a small, lovely café in Ragnhildstua, where they sell fresh coffee and



GALLERI SLÅEN

Søndre Slåen, 2584 Dalholen

+47 952 20 005
kari@gallerislaen.no
Gallerislaen.no



homemade traditional bakery goods, organic ice cream and chocolate confectionary in the opening hours of the gallery. You can also enjoy some art inside Ragnhildstua.

WELCOME TO THE OPENING

Sunday 3 July 12 noon.

OPENING HOURS 2022

Open every day from 3 July - 14 August, 12 noon-5pm. Come and experience the art!

The gallery is located on route 29. Turn off the E6 highway at Hjerkin and follow road 29 towards Follidal for about 10 km until you see signs for Galleri and Ridesenter. From Follidal: Follow route 29 towards Hjerkin for about 20 km.



© Ragnhild Slåsether



© Ragnhild Slåsether

JOKER FOLLDAL

Welcome to Joker Follidal! You will find all your everyday grocery requirements here, including a large selection of fresh fruit and vegetables, fresh bread and baked goods. Do you arrive with an electric bike? Please use our charging station free of charge.

In addition to groceries, we have a medication outlet, Norsk Tipping services and you can pick up parcels from DHL and Helt Hjem.

We stock a wide range of toys and gifts as well as tempting hot food from the warmer. Our pizza concept is very popular. You can pick up a takeaway pizza straight from the oven or enjoy a pizza in our small café.

If you order a cake online (or at the shop) by 12 noon, you can pick it up the following day. That makes it easy to celebrate children's birthdays, weddings, 60th birthdays or other nice occasions with family and friends.

Welcome to a pleasant shopping experience!

OPENING HOURS 2022

- Weekdays 7am-8pm
- Saturdays 8am-8pm

JOKER FOLLDAL

Liaveien 1, 2580 Follidal

+47 62 49 01 74
joker.follidal@joker.no
Jokerfollidal.com
Joker.no/finn-butikk/joker-follidal





STRØMBU REST AREA

STRØMBU RASTEPLASS

Strømbu Rest Area is the natural base for mountain walks westward in Rondane and eastward in Sølknlettområdet. The roof terrace has seating areas and a delightful view of the mountains and the river Atna. Large, disability-friendly toilet facilities is located in a building nearby. There is a parking lot, and walking paths in almost every direction.

TOURIST INFORMATION

We offer tourist information, kiosk, traditional local baking and crafts, lounge with a fireplace and spectacular views through panoramic windows. You are welcome to ask us about offers along the Rondanevegen, about hiking, cycling, accommodation, restaurants or for the right direction.

MARKED PATHS NEARBY STRØMBU

We can offer short, marked paths. Please look at page 35.

CANOE RENTAL

The family friendly river Atna, flows gently past the rest area. There are many nice places along the riverbank to stop for a rest or camp overnight. NOK 400 for the first day and NOK 200 for the second day. This

package includes a canoe, oars, life vest and return transport of the canoe.

CYCLE RENTAL

In Atndalen, there are many mountain roads and paths, and the road 27 is well suited for cycling. NOK 200 for the first day and NOK 150 for the second day. This package includes a bike, helmet and a high visibility vest. You will get good advice and a map on your trip.



© Roger Ellingsen / Statens vegvesen



© Rondane Rast og Info



FOLLDAL SPORT

Folldal Sport stocks everything you need for a successful trip into the forest or mountains - during summer or winter.

We can offer:

- Fishing gear and fishing licenses
- Cycles
- Hunting and outdoor recreation equipment
- Weapons and ammunition
- Dog food and dog accessories
- Skis and skiing accessories
- Clothes for all ages

Check out our Facebook site for extended opening hours during the summer season and for good offers.

The hosts Aud Johanne and Ola wish you all a warm welcome to a pleasant shopping experience.



FOLLDAL SPORT

Gruvvegen 16, 2580 Folldal

+47 481 47 284
post@folldalsport.no
Folldalsport.com



© Helge Stikbakke / Statens vegvesen





FOLLDAL MINES FOLLDAL GRUVER

FOLLDAL GRUVER - A MINING COMMUNITY WITH ROOTS BACK TO 1748.

Folldal Gruver is one of 15 constructions that are part of the Riksantikvaren conservation program for technical and industrial heritage sites. The construction consists of 70 buildings, as well as mining gates, slopes and tipping. Today the area is an active museum with exhibitions, marked paths, cafe, accommodation and the main attraction - mine.

OPENING HOURS 2022

June 11 - August 21 every day 11am-6pm.
Train trip in the mine every hour 11am-5pm.

Except the summer season you can take a train trip, visit the museums and more together with your group. We would like to make an arrangement that suits your group whether you are a school class or a retiree association. You can also get guided tours through the production line or a trip walking into the mine. Please contact us at post@folldalgruver.no



© Pedersen / Folldal Gruver

COMBINED TICKET - TRAIN/MUSEUM

Adults over 15 years: NOK 175
Children 4-15 years: NOK 85
Children 0-3 years: free

TAKE THE TRAIN INTO THE MINE

Adults over 15 years: NOK 140
Children 4-15 years: NOK 70
Children 0-3 years: free
Children under 8 years only accompanied by adults.

MUSEUM

Adults over 15 years: NOK 60
Children 4-15 years: NOK 30
Children 0-3 years: free

TRAIN TRIP

Join an exciting train ride through Stoll 1. 600 meters in the mountains Worms Hall is located - a fantastic arena with a very special atmosphere.

MUSEUM

Get to know the secrets of the mountain and the people who drive them out. The museum also contains an exhibition about nature, wildlife and national parks in the region.

FOLLDAL GRUVER

Verket 43, 2580 Folldal

+47 62 49 05 05
post@folldalgruver.no
folldalgruver.no



CULTURE TRAILS

Take a walk through the 20th century socially layered mining communities, follow the production, or take a closer look at the tracks after the operation in the 17th and 19th century.

NATURE PATHS

Test your knowledge of animals, plants and rocks! The tasks can be solved by children and adults together.

EAT

Traditional cuisine is served with a strong touch of regional flavors and raw materials, as well as a simple café menu, at Gruve-

kroa. The venues are suitable for smaller conferences and companies and can be hired by private and others outside of the high season. The kitchen is happy to help you put together a memorable menu for you.

SLEEP

At Folldal Gruver, you can stay in buildings with historical sus - from the simple and practical in Rallarstua to the manorial in the Directors Residence. It is a short distance to the attractions of the mine and beautiful hiking trails, and walking distance to Folldal centre.

Look at page 50 for more info. For prices and booking, see folldalgruver.no



© Johnsrud / Folldal Gruver



© Johnsrud / Folldal Gruver



© Johnsrud / Folldal Gruver



© Johnsrud / Folldal Gruver





FOLLDAL SYKKELMEKKA

Folldal Sykkelmekka has the bicycle that suits you!

We stock all sizes and price categories, as well as a good selection of spare parts such as chains, cassettes and brake pads.

We have both mountain bikes, road bikes, hybrid bikes and children's bikes, and we perform repairs and offer bike rentals.

FOLLDAL SYKKELMEKKA

Lillekroken 57, 2580 Folldal

+47 957 57 525
sstoeen@online.no



© Øyvind Wold



© Julia Hamre



© Inger Holberg



© Inger Holberg



© Hilde F. Tveråen



© Anne Britt Kjongsberg



© Rondanvegen

PRICES

RENTAL	Duration	Price
Cycle, incl. helmet and basic tools	1 day	120 per cycle
Cycle, incl. helmet and basic tools	Several days	Please contact us



HUSET AUKRUST

Kjell Aukrust is one of our foremost cartoonists and most popular authors. His art and universe have been lived out on radio and TV, theatre, ballet and not least on film. Aukrust's drawings were purchased by the National Gallery and the Norwegian Museum of Contemporary Art. A museum building designed by Sverre Fehn opened 26 years ago. A monument of Kjell Aukrust and his two little friends, which was made by Nils Aas, stands up at Steia by the church. This was the Alvdal locals' way of honouring and thanking him for putting Alvdal on the map – a place in the middle of the world!

© Morten Munthe



HUSET AUKRUST

Nord-Østerdalsveien 5119, 2560 Alvdal

+47 62 48 78 77
post@aukrust.no
Nettbutikk: Aukrust.no



THE PLACE FOR YOUNG AND OLD

Kjell created characters like Solan and Ludvig, Reodor Felgen and Gurin. Besides drawings and stories, film clips and paintings, Huset Aukrust contains many of Kjell's, or should we say Reodor Felgen's, inventions and technical devices. You will also find the office of the Flåklypa Tidende newspaper, and inventions like the chocolate machine, dasskraftverk and vusvoltunnel. You can watch all our films in the Flåklypasalen cinema. In the large outdoor area overlooking the mountain Tronfjell, you will find Ludvig's labyrinth of flowers and perennials – and happy buzzing bees. You can shoot with a slingshot and build your own log house! At the top of Grimshaugen, the whole family can board our own rocket and head to the moon.

OPENING HOURS 2022

Open daily year-round 10am-5pm
Summer opening hours 10am-6pm

ENKEFRUENS HANDEL

The museum shop and online store at aukrust.no

Please e-mail us at post@aukrust.no to book guided tours for larger groups.

© Andrine Tanem



SØBERG GÅRD

Søberg Farm - farm trade with outlets of lights, presents and local food in Alvdal.

Since the year 2000 we have produced and sold candles in all sizes, shapes and colours. The old farm building on Søberg Farm became Lysgrotten - and we have established a good tradition of providing mood lighting for inspiration and joy to all occasions and seasons.

We have filled our storehouse as they did in the old days. In two floors and several rooms, you can experience lots of local food and brew from the region. You will find local food as it should be, in an atmosphere it deserves.

In 2018 the oldest building and the main cowshed on the farm was restored, and we can now invite to major events and servings at the farm.



© Tom Gustavsen

Stop by - taste and buy from our rich selection of locally produced food.

OPENING HOURS 2022

Open 10am-6pm all days and by appointment.

Extended opening hours during the seasons; Summer, Christmas and Easter.

We are easy to find along Rv3, about 5 km north of Alvdal centre and 20 km south of Tynset.



© Tom Gustavsen

SØBERG GÅRD

Nord-Østerdalsveien 5716, 2560 Alvdal
Kontaktperson: Maren Solvang Johnsen

+47 480 29 323
post@soberggard.no
Soberggard.no



GALLERI SNØHETTA

Galleri Snøhetta is located in a restored 19th century storehouse. You can experience nature photos taken in between Rondane, Femunden and Snøhetta. Photos of flowers, landscapes and animals such as martens, reindeers and musk ox you will find in first floor. On the ground floor you will see Bjørns favourite animal, the moose.

MOOSE SAFARI

Galleri Snøhetta is meeting point for those who want to join Bjørn on a moose safari. These take place on evenings in June, July and August. So far, the trips have been 100% successfully. Sometimes we have seen moose at close range. Other times further away. We may also get to see the big bull moose. Please contact Bjørn and he will arrange the safari.

The gallery is located by Dalgardsveien 2 km south of the northern entrance to Einunndalen valley on Dalholen, on the road between Hjerkin and Follidal. Everyone is welcome whether they want to admire or buy the photographs or just have a cup of coffee and a chat about photography, nature, hunting, fishing or the wilderness.

OPENING HOURS 2022

1 - 31 July. Fridays, Saturday and Sundays. 12 noon-5pm. Call Bjørn if you want to visit the gallery the rest of the year.

GALLERI SNØHETTA

Dalgardsveien 210, Nordre Nistuen, 2584 Dalholen

+47 913 46 096
b-brendb@online.no



© Bjørn Brendbakken



© Bjørn Brendbakken



VENABU FJELLHOTELL OG HYTTER

Venabu Fjellhotell is a friendly, family run hotel well known for its warm welcome and delicious food. Enjoy our generous breakfast, lunch and dinner buffets served in our panoramic dining room with stunning mountain views. Non-residents are welcome and we serve à la carte meals, coffee, cakes and waffles in our Bar.

Every Wednesday during the season we serve our special Norwegian 4-course menu of tempting, traditional foods.

Situated in the beautiful Venabygdskjellet plateau, on the edge of the Rondane National Park, Venabu gives access to many and varied hiking and cross-country ski trails. We run an active guiding programme: in the summer we offer hiking and horse-back riding, and in the winter, we offer skiing and snowshoeing.

ACTIVITIES AT VENABU

Horse-back riding
Guided hiking/walking tours and holidays
Photography courses
Canoe and bicycle rental
Lakeside bathing spot
Peer Gynt Festival packages
Guided cross country ski tours
Cross country ski lessons and courses
Ski hire
Horse drawn sleigh rides and dogsledding
Yoga, pilates, mindfulness and massage

For more information about accommodation, please look at page 42.



© Drømmen



© Venabu Fjellhotell



© Venabu Fjellhotell

VENABU FJELLHOTELL OG HYTTER

Rondevegen 860, 2632 Venabygd

+47 61 29 32 00
venabu@venabu.no
Venabu.no





SOLLIA WAR HISTORY MUSEUM

SOLLIA KRIGSHISTORISKE MUSEUM

On the listed farm Amperhaugen in Stor-Elvdal municipality Solli War History Museum is located. The unique collection put together by Jo Øvergaard was opened in June 2017. It is a collection of weapons, uniforms and effects related to, among other things, Milorg, Norwegian Independent Company No. 1 Group Grebe and Nasjonal Samling.

Visitors can experience items that appear with full uniforms, warships, and containers used to fly drop during World War II. It must also be mentioned that the German side is emphasized. Several of the items in the collection are from Jo's father Rolf Øvergaard. Rolf was incorporated into the "Grebe" in 1944. Hearing Jo telling stories from the days of war is alone worth a visit to the museum.



SOLLIA KRIGSHISTORISKE MUSEUM

Lyngstadveien 32, 2477 Solli

+47 907 51 833
jo@solli.net
Solli.net



Amperhaugen received the former quality brand Olavsrosa of the Norwegian Heritage Foundation. This mark is a sign of cultural experiences out of the ordinary and there was never doubt about the collection's location. In the farm it is also possible to stay overnight. See page 48 for more information.

OPENING HOURS 2022

1 July - 14 August, 12 noon-4pm.

Closed Mondays and Tuesdays.

Jo Øvergaard accepts visits beyond these times. Please contact Jo for an appointment.

PRICES

Entrance fee: NOK 150, - per person.

Children accompanied by adults, free of charge.

Groups, school classes, teams and associations are welcome to pre-order guided tours. Contact Jo Øvergaard. Price upon request.



Jo Øvergaard



KVISTLI ISLANDIC HORSE RANCH

KVISTLI ISLANDSHESTER

The hosts Anne Ma and Morten Sæterhaug with family offers many kinds of horseback riding opportunities in the Dovrefjell and Rondane mountains.

When you choose ranch living and horseback riding with Kvistli farm as a base, you get to take part in farm life with dogs, cats, llamas and 80 Icelandic horses. You will go on a horseback ride every day, in different directions and durations.



© Mette Sætrup

KVISTLI ISLANDSHESTER

Folldalsvegen 976, 2584 Dalholen

+47 920 37 398 (Anne Ma)
+47 924 62 635 (Morten)
post@kvistli.no
Kvistli.no



If you are looking for greater challenges, you can attend one of our theme trips, which have lodgings in different places in the mountains. These theme trips vary in difficulty and comfort, and there is something for everyone.

Whether you choose one or the other, the accommodation and meals are included. Kvistli Icelandic Horse Ranch won the 2014 "Norges Bygdeutviklingspris for Hedmark", Innovation Norway's Rural Development Award for Hedmark.



© Mette Sætrup

RIDING HOLIDAY LOCATED AT THE FARM - Price per person

7 days	6 days	5 days	4 days	3 days	2 days	Autumn weekend
12250	10550	8750	7050	5300	4300	4500

DROP-IN RIDING - Price per person

Horse care	Instruction			
	One hour	riding area	Half day trip	Full day trip
300	600	600	950	1250

THEME TRIPS - Check the webpage for more information

PRICES





1

Sohlbergplassen, architect Carl-Viggo Hølmebakk
© Jarle Wæhler / Statens vegvesen

SOHLBERGPLASSEN

Sohlbergplassen turns between slim pine trees and is located close to Atnsjøen.

The platform frames the view of Atnsjøen and the round mountains in Rondane almost as it appears in Harald Sohlberg's painting "Winter night in the mountains".

The viewpoint has been named one of Norway's most important buildings and has received several awards for good design and material use.

Sohlbergplassen is designed by architect Carl-Viggo Hølmebakk.



2

Solli Church
© Roger Ellingsen / Statens vegvesen

SOLLI CHURCH

This timber church was listed by Jon Jonsen in 1738. A Swedish man called Erik Walling decorated the church. The church is located between Atna in Østerdalen and Enden by Norwegian Scenic Route Rondane.

The church has richly decorated interior and is one of the most beautiful and best-preserved baroque churches in Norway. Next to the church, there is a small rest area. This rest area was shaped by Landscape Architect Lars Berge.

During the summer season, you are warmly welcome to attend guided tours and to be part of workshops. Please look at the website Solliia.net



3

Architect for the rest area and Fossehuset is Lars Berge, LJB AS.
© Jarle Wæhler / Statens vegvesen

ATNBRUFOSSEN VANNBRUKSMUSEUM OG FOSSEHUSET

This museum consists of a turbine house, a construction for timber floating and a smithy. The old saw at Atnbrua was modernised in 1914 but started back in the 1700s. Fossehuset is located nearby the museum and Architect Lars Berge designed it.

For more information about eventual opening hours, art exhibitions and other arrangements, please look at the website Solliia.net



© Lars J. Berge



4

STRØMBU REST AREA
STRØMBU RASTEPLASS

Strømbu is one of the main gateways into Rondane from the east, and a good base for hiking in Norway's first National Park. The rest area has a roof terrace, a tourist information and a heated shelter. The nearest neighbour is the Atna River. Beside the rest area, there is a parking place and disability-friendly toilet facilities.

Strømbu Rest Area was designed by Carl-Viggo Hølmebakk

During the summer season you can rent canoes and bikes at Strømbu and go hiking. Look at page 18 and 35 for more information.



5

VIEWPOINT AT FOLLIDAL MINES
UTSIKTSPLASS VED FOLLIDAL GRUVER

The Follidal Mines are one of Norway's foremost technical and industrial heritage site, with approximately 70 well preserved buildings. The mines were in operation from 1748 to 1993, producing copper, zinc and sulphur. Barracks for the workers and the director's mansion containing the luxuries of the era bear witness to the class distinctions that characterised this mining community.

Below the mines, there is a parking lot with information and viewpoint.

This viewpoint was opened in 2011. Landscape architect is Inge Dahlman, from the Landscape factory.



6

VIEWPOINT SNØHETTA



© Ketil Jacobsen



PATHS IN GRIMSDALEN

Grimsdalen is well located for both Rondane and Dovre National Parks. We'll tell you more about three walking paths that suits young and older. You can also find info about these trips on the website ut.no



1 BARTSTIEN

Marked roundtrip that starts at the info point below Grimsdalshytta. The round is 2,8 km and has 11 info points about the formation of the landscape for today's use.



2 GRUVLISTIGEN

Marked roundtrip that starts at the summer mountain farms at Tolleivshaugen. Experience old hunting culture, 250 years old mining area and geological things with tracks from the last ice age. The paths are 5,5 and 8 km long. Several info points along the paths.



3 PARADISRUNDEN

Nature- and cultural path that starts at the summer mountain farms at Tolleivshaugen. The path takes you to Paradis and is an easy round on 3,5 km. Beautiful view of Grimsdalen and Rondane.



HIKES NEARBY STRØMBU RASTEPLASS / REST AREA

Strømbu rest area is a great base for short and long hikes. Do you want to stop to get an ice cream, stretch your legs or just find something to do a couple of hours? Then Strømbu is the place to be.

Go for a walk, rent a canoe, or take a few throws with your fishing rod. Please ask the hosts in the kiosk for tips of what you can do. Look at the pages 18 and 32 for some more info about Strømbu rest area.

- Easy walk - about 2 km
- Easy walk - about 8 km
- Demanding walk - about 2,5 km to the top





The restored old Grimsa bridge over Grimsa
© Jarle Wæhler/Statens Vegvesen



FALLET AND GRIMSDALSBOGGEN

The restored old Grimsa bridge over the Grimsa River, at the bottom of the valley of Grimsdalen in Folldal. The original bridge was built in 1870 but was dismantled in 2004 as the wood was rotting. The new bridge opened on August 28, 2005.

The Norwegian Public Roads Administration (Statens vegvesen) has contributed to a car park and a path to the bridge as an initiative in conjunction with the Norwegian Scenic Route Rondane.



Nasjonal Scenic Route Rondane. Muen in the horizon
© Jarle Wæhler/Statens Vegvesen

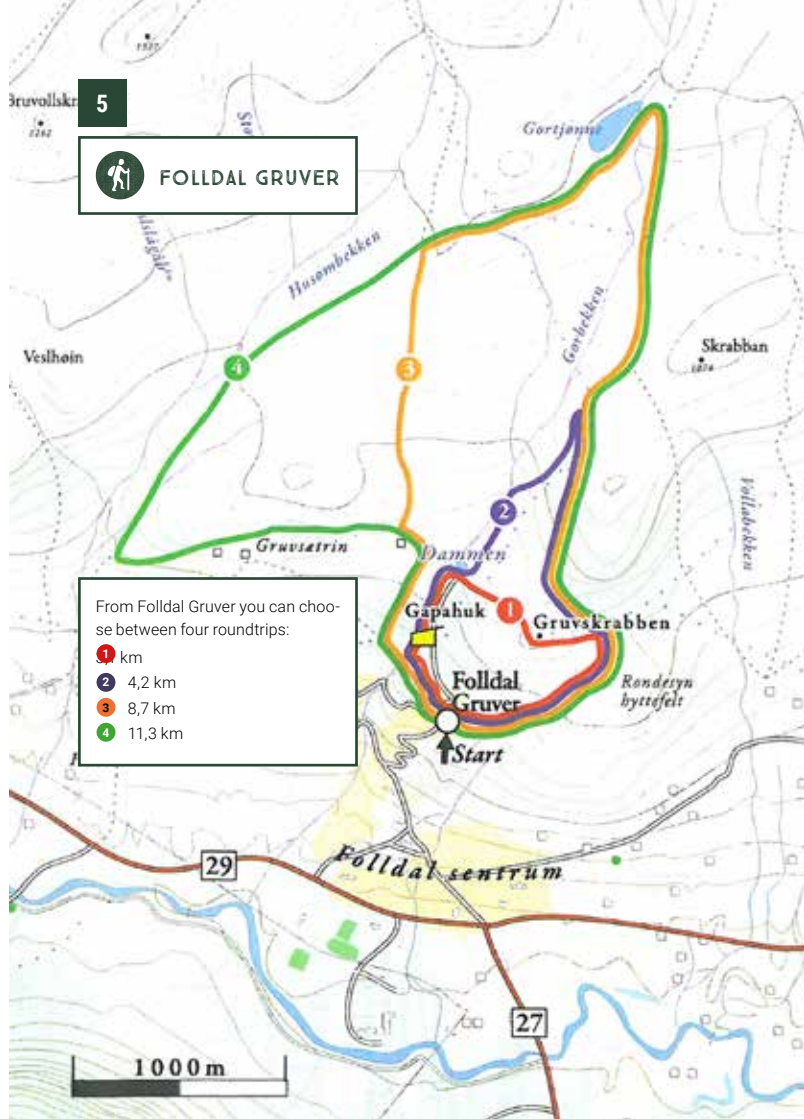


MUEN

Park your car at the county border between Hedmark and Oppland on route no. 27. Follow the DNT-route* up to the top. You will be rewarded with a spectacular view. Route no. 27 over the Venabygdsfjellet mountain plateau is the southern extreme of the Norwegian Scenic Route Rondane.

The mountain peak of Muen dominates the landscape along most of this stretch of road between the valleys of Gudbrandsdalen and Østerdalen.

*DNT short for Den Norske Turistforening/
The Norwegian Trekking Association

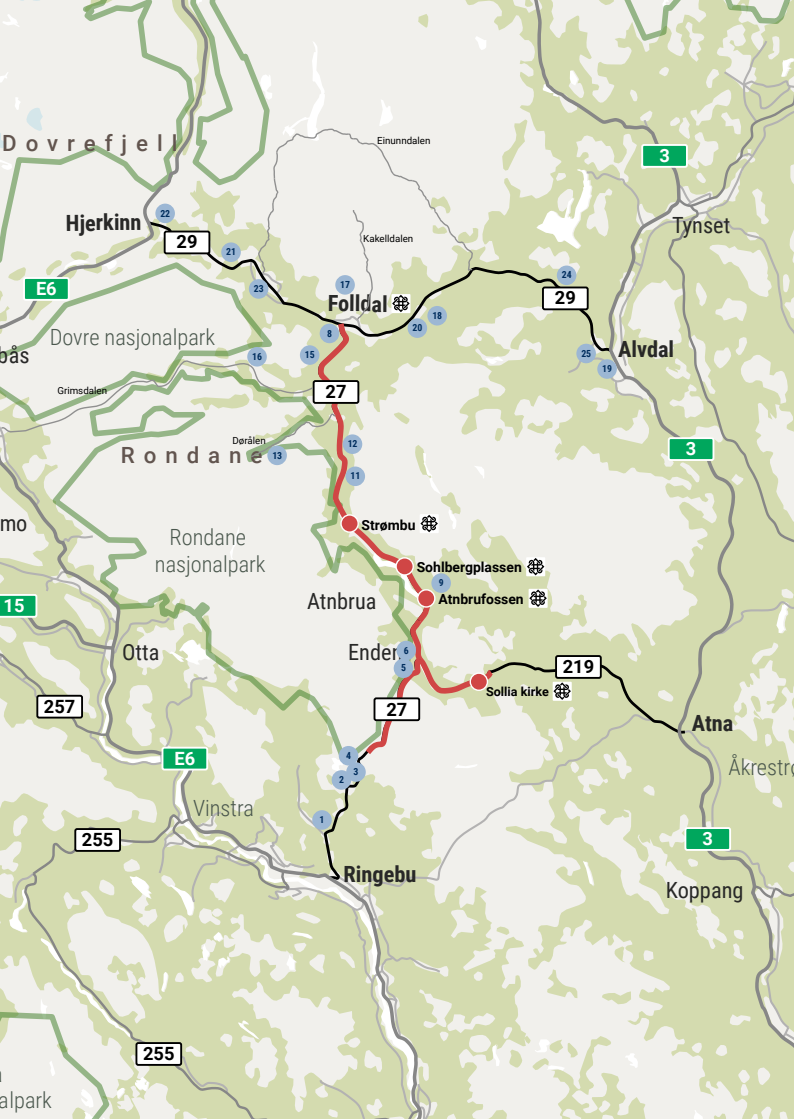


FOLLDAL GRUVER

From Folldal Gruver you can choose between four roundtrips:

- 1 1 km
- 2 4,2 km
- 3 8,7 km
- 4 11,3 km





ACCOMMODATION

- 1 Trabelia Hyttegrend & Camping
- 2 Lundes og Lundegrenda
- 3 Venabu Fjellhotell og hytter
- 4 Spidsbergseter Resort Rondane
- 5 Solhaug Camping
- 6 Rondane River Lodge
- 8 Det gule retrohuset - Kvile
- 9 Amperhaugen
- 11 Berg Gård
- 12 Stadsbuøyen hytteutleie
- 13 Nedre Dørålseter Turisthytte
- 15 Fallet Nordre
- 16 Bergseng Seter
- 17 Folldal Gruver Bed & Breakfast
- 18 Kvebergsøya Gard
- 19 Frich's Hotell og Spiseri Alvdal
- 20 Brendryen Camping
- 21 Kvistli Islandshester
- 22 Hjerkind Fjellstue og Fjellridning
- 23 Fjellsyn Camping
- 24 Gaiaenter
- 25 Gjeltten Bru Camping





TRABELIA HYTTGRENØ & CAMPING

Trabelia Hyttgrend & Camping is located south of Rondane against Gudbrandsdalen, along the Rondanevegen. 10 km up from the route E6, 850 metres above sea level. We live in a breath-taking mountain area for walking, fishing, skiing and we can simply watch the wildlife and enjoy the silence.

Trabelia has practical cabins with good standard. All cabins have showers and toilets, dishwasher and stove, all necessary kitchen accessories and a television. We have two kinds of cabins, and they are two or six-bedded.

The caravan park is located on an old summer farm and has plenty of space for tents and caravans. Every seat has power, and the campers have access to modern toilet facility with sauna, washing machine and dryer, as well as kitchen stove and dishwasher. All of this are included in the price, and we don't have any coin Op. The prices on our website are "all included" prices.

OPENING HOURS

All year around, so please come and visit us also in the winter. This area is an eldorado for skiing in excellent trails in the mountain and in the wood.

TRABELIA HYTTGRENØ & CAMPING

Rondevegen 236, 2632 Venabygd

+47 61 28 40 75
post@trabelia.no
Trabelia.no



© Lars Lundbakken



© Lars Lundbakken



FJELLSYN CAMPING

Fjellsyn camping is really nice located in the middle of Folldal and Hjerkin and is a great starting point for several fantastic mountain walks, both on foot, by bike or by car.

Norway's longest summer farm valley, Einunndalen, is located nearby the campsite, and there are short distances to both Dovrefjell and Rondane.

When visiting us, you can fish in mountain water and rivers, and go hiking.

At the campsite you will find everything you need for a pleasant stay. We have good space for caravans / campers and tents with 90 power connectors.

We have a total of 20 cabins with 4-7 beds. 17 of these are with shower and toilet and 28 m² to 50 m².

The service house houses a gas station with groceries and some apartments.

Marte, Grethe and Lars wish you a warmly welcome.



© Merete Kilde Kulsveen



© Merete Kilde Kulsveen

FJELLSYN CAMPING

Folldalsveien 1711, 2584 Dalholen

+47 62 49 30 82
dalholen@bbnett.no
Fjellsyn.no



ACCOMMODATION

	Per night
Cabin, 1 bedroom, 4 beds, shower/toilet	850
Cabin, 2 bedrooms, 5/6 beds, shower/toilet	950
Cabin, 2 bedrooms, 7 beds, shower/toilet	1 100
Cabin, 1 bedroom, 4 beds	500
Caravan/camper	270
Car and tent	200
Electricity	50

PRICES



VENABU FJELLHOTELL OG HYTTER

Venabu Fjellhotell is a family-owned hotel which is known for its homely and warm atmosphere. Venabu is the perfect base for adventure in the mountains, summer and winter.

The chefs use good quality products, preferably from local producers, to give you a good taste experience.

Every Wednesday in the main season we serve our specialty, Norwegian "4-course menu", which consists Norwegian traditional food based on local recipes.

The dining room has a panoramic view of Rondane and Muen. Apart from the regular meals, we have a-la-carte with sour cream waffles, rømmegrøt, meat of moose, salads and sandwiches.



© Jørn Arekleit Omre



© Dreamin'...

We have rooms of different standards; double, single and family rooms. Six of the rooms are designed for wheelchair users. Free WIFI available in all rooms. Free coffee and tea for accommodation guests.

Venabu also has high standard log cabins for 2-10 people.

Venabu Fjellhotell is located 932 meters above sea level along route 27, the mountain pass between Gudbrandsdalen and Østerdalen, just south of Rondane National Park. Feel free to contact us for more information or just stop by.

Look at page 27 for information about activities.



© Venabu Fjellhotell

VENABU FJELLHOTELL OG HYTTER

Rondevegen 860, 2632 Venabygd

+47 61 29 32 00
venabu@venabu.no
Venabu.no



SPIDSBERGSETER RESORT RONDANE

Spidsbergseter Resort Rondane is situated on the Venabygdsfjellet mountain plateau, at the gateway to the Rondane National Park. The resort is famous for its unique atmosphere and friendly, personal service, and is designed to provide guests with wonderful experiences and life-long memories.

Spidsbergseter offers hotel rooms, apartments, lodge, Fjellbadet all year camping and ski centre. The hotel serves meals based on the best local ingredients. The food, the nature and a lot of activities, make Spidsbergseter one of mountain Norway's most popular hotels.

OUR FACILITIES INCLUDE

- Accommodation for approx. 200 persons in hotel rooms and apartments, all with flatscreen TV, WIFI in the hotel rooms
- 3 restaurants: Rustikk, Utsyn and Nordlyset
- Fjellrypa Gave & Interiør
- Villreinen Café & Bar - a la carte
- Aquavit Barn - the only one in the world who has more than 140 varieties
- Fjellbadet - indoor water park
- Children's playroom
- Rental of bikes, boats, canoes
- Course and conference facilities
- 150 km prepared cross-country ski trails ski in/ski out
- Spidsbergseter Ski Centre, two lifts and three slopes
- Hiking trails both for walking and cycling, guiding on request
- Close to the village of Ringebu with several specialty shops
- Camping ground open year round



© Bård Gundersen



© Bård Gundersen

SPIDSBERGSETER RESORT RONDANE

SPIDSBERGSETER RESORT RONDANE

Flaksjøliven 82, 2632 Venabygd

+47 61 28 40 00
booking@spidsbergseter.no
Spidsbergseter.no



SOLHAUG CAMPING

Solhaug Camping is a friendly, family-run camping ground set in idyllic surroundings on the Norwegian Scenic Route Rondane. The camping ground is open year-round. In summer you can go fishing, take a nice hike or just enjoy the tranquillity, while at the camping ground the grilling hut is the natural place for guests to gather. In winter you can head straight onto the ski trails or try ice fishing, and of course experience snow!

We have five pleasant cabins (18 m²) with access to the communal ablutions block and one larger cabin (45 m²) with a private bathroom. We have caravan, camper and tent/lavvo sites. The camping ground has



© Mari-Anne Hemli

a good ablution block with showers and toilets. Please look at our website for more information and prices.

You will feel welcome as a guest of Mari-Anne and Erik Hemli.



© Erik Hemli

SOLHAUG CAMPING

Ringebuvegen 66, 2477 Solliå

+47 901 24 960 (Mari-Anne)
+47 901 23 753 (Erik)
mail@solhaugcamping-solli.no
solhaugcamping-solli.no



© Erik Hemli



RONDANE GJESTEGÅRD RONDANE RIVER LODGE

Rondane River Lodge is situated in beautiful Solliå at an altitude of 780m above sea level. A crystal-clear river flows through our garden and our nearest neighbour is the Rondane National Park. Located midway between Oslo and Trondheim this is a great place to stay for a relaxing holiday or an overnight stop.

Rondane River Lodge is a charming little hotel with 10 double rooms and 10 traditional log cabins. We love to care for our guests and help with the planning of activities like hiking, canoeing, packrafting, stand up paddling, biking and fishing. Perhaps a moose or musk ox safari sounds interesting? In winter we offer skiing, snowshoe hiking, ice fishing and dogsledding.

We have 4 traditional rooms and 6 newly renovated rooms, all of them have private bathrooms. The log cabins offer more space, you can cook your own meals and enjoy the fireplace. Firewood is stacked just outside the cabin door.

Read more about our restaurant at page 11.

We hope to see you soon!
Benjamin, Karin, Liv, Mia, Bart, Ellen, Ilona and Vidar



© Marnix Van Marcke / Rondane River Lodge



© Marnix Van Marcke / Rondane River Lodge

RONDANE RIVER LODGE

Rondeveien 34, 2477 Solliå

+47 62 46 37 20 / +47 959 60 360
info@rondaneriverlodge.no
rondaneriverlodge.no



ACCOMMODATION

	1 night
Per person in standard double room with shower/toilet, incl. breakfast	From 650
Per person in superior double room with shower/toilet, incl. breakfast	From 775
Single room surcharge	From 400
Cabin, up to 2-3 persons, with shower/toilet	From 950
Cabin, up to 5-6 persons, with shower/toilet	From 1 200
Rental of linen set, per person NOK 190 (applies to cabins only)	
Cleaning on departure, if required (applies to cabins only) NOK 390 (small) and 490 (big)	

PRICES



KVEBERGSØYA GARD



© Anne Britt Kjensberg / Kvebergsøya Gard

Kvebergsøya Gård is a traditional farm in Follidal near Rondane National Park, surrounded by meadows, small lakes, forests and easily accessible mountains. This is an ideal base for exploring the mountains on foot or by bike and for rod and fly fishing in Grimsa and Folla rivers.

We offer cosy accommodation for 10-12 guests in an environment reminiscent of your great grandmother's era with cog-joined timber walls and latticed windows. We have a single room, twin room and family room with a shared bathroom/toilet in the hallway, a double room with private bathroom and the "Eldhuset" cottage with a kitchenette and bathroom.

KVEBERGSØYA GARD

Kvebergsøyvegen 285, 2582 Grimsbu

+47 481 73 447 / +47 909 19 903
info@kvebergsøya.com
kvebergsøya.com



Our function room in the converted barn "Fjøsset" is suitable for meetings and conferences room. We can cater for groups of 30-50 people at a long table to celebrate birthdays, christenings, confirmations and weddings, etc.

We welcome guests from all over the world to our historically authentic farm. Please contact us by e-mail for booking and prices.



© Anne Britt Kjensberg / Kvebergsøya Gard

BRENDRYEN CAMPING

Brendryen Camping is located close to Rondane and Einunndalen and is a great starting point for both summer and winter trips.

ACCOMMODATION

We have pitches for caravans/campers and nice places for tents. The camping site is also great for cycling tourists. There is access to electricity, and we have newly refurbished sanitary facilities. The cabin has five beds, two bedrooms, living room/kitchen and bathroom.



© Brendryen Camping



© Brendryen Camping

Brendryen Camping is a quiet and calm camping site with good hunting and fishing opportunities in the immediate area. It is a short distance to nice a swimming area and hiking trails in summer and stadium for cross-country skiing in winter.

LOCATION

Brendryen Camping is located along the fv. 29 approx. one mile from Follidal centre towards Alvdal. It is close to Einunndalen, which is Norway's longest summer mountain farm valley in operation and a great hiking destination for young and old.



© Brendryen Camping



© Brendryen Camping

BRENDRYEN CAMPING

Follidalsvegen 3745, 2582 Grimsbu

+47 908 38 059 / +47 901 55 653
hftver@online.no
Brendryencamping.no



AMPERHAUGEN

The farm Amperhaugen Gård is a picturesque, old farm worthy of preservation. With the Rondane mountains as its neighbour, you will experience a nice combination of Norwegian wooden buildings and Østerdalen hospitality. The farm is located in a wonderful cultural landscape. You will experience grass on the roof and peace of mind!

LÅVESTUA

Låvestua has two bedrooms (one four-poster bed with two mattresses 200 cm x 75 cm and one four-poster bed with four mattresses 200 cm x 75 cm), a lounge and kitchenette. 55 m² spread over one and a half floor.



AMPERHAUGEN

Lyngstadveien 32, 2477 Solliå

+47 907 51 833
jo@solliå.net



The unit is located separately. No TV but free Wi-Fi access. A sauna is available on request and a shop is only a short distance away.

Amperhaugen Gård has been awarded the St Olav's Rose, the hallmark of Norwegian cultural heritage, for the farm environment and the hosts' exceptional ability to inform guests about it. Please visit olavsrosa.no and kulturav.no

Sollia Krigshistoriske Museum is located on the farm. Read more at page 28.



FALLET NORDRE

Fallet Nordre is a sheep farm and an accommodation located at the end of the valley of Grimsdalen in Follidal Municipality.

The farm is located near the Norwegian Scenic Route Rondane, and is a perfect base for hiking in Grimsdalen, Rondane National Park and Dovrefjell National Park. The farm is around 250 years old and offers accommodation in apartments and cabins.

Our guests can choose between a wide range of activities and attractions close by the farm: hiking in Rondane's majestic mountains, fishing, hunting, river sports, mountain climbing, dog sledding and the cycling route Tour de Dovre which is perfectly located right by the farm.



We have beds for 26 people on the farm and 8 on the summer farm.

For more information, please check the website or call the friendly hosts at the farm.



© Fallet Nordre

FALLET NORDRE

Grimsdalsvegen 3895, 2580 Follidal

+47 990 95 181 / +47 950 69 701
post@falletnordre.no
falletnordre.no



ACCOMMODATION	1 night	1 week
Stabbur, apartment, approx. 60 m ² , 3 bedrooms, sleeps 6, shower/toilet	900	
Eldhus, sleeps 2 (1 double bed)	500	
Sveastugu, cabin, 2 rooms, sleeps 4	750	
Smiuhaugen, cabin, 3 bedrooms, sleeps 6	750	
Small storehouse, sleeps 2 (single beds)	500	
* We have sanitary facilities with shower/toilet for the units without bathrooms		
Rental of linen set (per person) NOK 150		
Cleaning on dep: NOK 400 per apartment/cabin - NOK 200 per Eldhus/Small storehouse		
For more than 4 adults, 100 per person/per night will be added to the basic price		
Fallsetra in Einunndalen, main house and small house, sleeps 4 each building (min. 1 week)	8000	





FOLLDAL GRUVER BED & BREAKFAST

At Follidal Gruver, you can stay in buildings from the past - from the simple and practical in Rallarstua to the old-fashioned and manorial in the Directors Residence.

RALLARSTUA

Convenient alternative with simple standard and brilliant views. Suitable for cyclists, skiers and families with children. Rallarstua has 18 beds in 7 rooms, as well as a kitchenette and 3 shared bathrooms. All rooms have a sink. On the loft there is a living room with TV and stereo. From the outside plateau you have fantastic views of Rondane, and beautiful hiking trails of varying length are in the immediate vicinity.

DIRECTORS RESIDENCE

Gentle and charming; fits best for smaller groups or couples who want something out of the ordinary. The residence was built for Director Lund and was completed in 1910.

FOLLDAL GRUVER BED & BREAKFAST

Verket 43, 2580 Follidal

+47 62 49 05 05
post@follidalgruver.no
Follidalgruver.no



Back in these days the director had his own swimming pool, tennis court and ornamental garden with gazebo. The tennis court is still in use and can be used by guests. The house has 5 bedrooms with a total of 14 beds. All rooms have sink, bathroom and toilet in the hallway.

All guests are welcome to rent the banquet facilities in the residence. Then we open the doors to the elegant dining room, which seats up to 35 people. Rental requests must be sent to post@follidalgruver.no



KVISTLI ISLANDHORSE RANCH KVISTLI ISLANDSHESTER

Kvistli offers a nice, cosy atmosphere and basic accommodation in a choice of single, double and family rooms, both summer and winter.

We want you to feel at home on our ranch. We have recently renovated this building, complete with new bathrooms and interior decoration. There is a dining room, large lounge and television room, as well as a modern bathroom.

We serve a buffet breakfast, lunch and dinner to our guests. All meals are enjoyed around the long table in the dining room. Experience the farm life with our dogs, cats, rabbits, llamas and our 80 Icelandic horses. Look at page 29 for information about horseback riding.

Welcome to our farm! Regards the host Anne Ma and Morten Sæterhaug with family.

KVISTLI ISLANDSHESTER

Follidalvegen 976, 2584 Dalholen

+47 920 37 398 (Anne Ma)
+47 924 62 635 (Morten)
post@kvistli.no
Kvistli.no



ACCOMMODATION

	Per night
Family room (applies to min. 3 people sharing). Incl. breakfast, per person	Fra 450
Double room, incl. breakfast, per person	550
Single room surcharge per person in double room	330
Double multi bed room (minimum 2 nights), incl. full board, per person	1050
Single room surcharge per person in double/multi bed room	330
Rental of linen set, 200	
Rental of towel, 50	





NEDRE DØRÅLSETER TOURIST CABIN

NEDRE DØRÅLSETER TURISTHYTTE

The Nedre Dørålseter summer mountain farm is located close to Rondane National Park, the first National Park in Norway. We have three cabins with 10 rooms and a total of 25 beds. Our dining room has 40 seats.

Nedre Dørålseter offers a fantastic base for hiking in the National Park, a majestic alpine landscape featuring no less than 10 peaks over 2000 m above sea level. Choose day trips or walks that has varying degrees of difficulty. The fertile valley of Dørålsdalen stretches 10 km from the summer mountain farm and you can hike beside rivers and lakes surrounded by mountains on both sides. The valley is a unique geological area with many excellent fishing spots.

Our mission is to provide a pleasant stay for you. We wish to welcome you as a guest in the mountains, whether you stay with us for a few days, stop during a mountain hike or drop in to enjoy the fresh mountain air and a cup of coffee.

OPENING HOURS 2022

18 June - 19 September

The price includes accommodation, three course dinner and breakfast buffet. You pay per person and the package price is NOK 1360 per night. The cabins and rooms are different sizes and it's the same price no matter where you live. We give 10 % to DNT members. Groups over several days are kindly requested to contact us for offers. See our website for info about the prices.

Welcome to Nedre Dørålseter Tourist Cabin Your home in the mountains! Trond & Elin Stordal



© Nedre Dørålseter Turisthytte



© Nedre Dørålseter Turisthytte



Nedre Dørålseter Turisthytte

NEDRE DØRÅLSETER
TURISTHYTTE

2580 Follidal

+47 913 36 478
post@doralseter.no
Doralseter.no



FRICH'S HOTELL OG SPISERI ALVDAL

A natural stopover along rv3 - midway between Oslo and Trondheim. We have Huset Aukrust and Tronfjell (1666 metres above sea level) as our nearest neighbours. We offer 38 newly renovated hotel rooms with comfortable beds. In addition, we have meeting rooms, caravan parking with sanitary facilities, parking for car, bus and trailer, Tesla charging stations, and we offer catering.

We serve breakfast, lunch and dinner. Free coffee for all dinner guests.

The winter garden is a good alternative for those who want to take the break under the open sky.

We look forward to seeing you.

OPENING HOURS 2022

All days 8am-11pm

FRICH'S HOTELL OG SPISERI
ALVDAL

Nord-Østerdalsveien 5148, 2560 Alvdal

+47 62 48 80 00
alvdal@frich.no
Frich.no



© Frich's Hotell og Spiseri Alvdal



© Melanie Johansen



© Frich's Hotell og Spiseri Alvdal





GJELTEN BRU CAMPING

Gjeltten Bru Camping in Alvdal is idyllically situated by the river Folla right by route 29 to/from Folldal. 1.5 km from the route 3 and 4 km from Alvdal city centre.

Gjeltten Bru Camping is a quiet family campsite with 13 cabins, plenty of space for tents, campers and caravans, modern sanitary facilities, kiosk, information, television lounge, children's playground (school playground) and Joker grocery store.

Right at the camp site there are unique hiking opportunities in Alvdal Vestfjell (Sølnkletten 1826 metres above sea level) and Haustdalen or on marked trails in big parts of Alvdal. Three marked trails run from Gjeltten Bru Camping. In the rivers Folla and Glomma, as well as in several mountain lakes, there is rich fishing.



© Gjeltten Bru Camping

Alvdal is the gateway to Rondanevegen from the north-east to Røros from the south, and a great starting point for a variety of experiences: Huset Aukrust, North-east Europe's largest canyon Jutulhogget, Tronfjell (with a road up to 1666 metres above sea level) (le to all), Norway's longest and perhaps most beautiful summer farm valley Einunndalen, Alvdal Vestfjell with unique fishing and hiking opportunities, and the mining town and the world heritage site Røros.

Our campsite is open all year for renting cabins and from 15 May until 15 October for camping.

Purchase of groceries is available at the Joker grocery store nearby. Welcome to Gjeltten Bru Camping!



© Gjeltten Bru Camping



© Gjeltten Bru Camping

GJELTEN BRU CAMPING

Sølendalsveien 15, 2560 Alvdal

+47 973 23 588
post@gjelttenbrucamping.no
gjelttenbrucamping.no



STADSBUØYEN CABIN RENTAL

STADSBUØYEN HYTTEUTLEIE

Stadsbuøyen Cabin Rental is located close to majestic Rondane mountains. Some of The Norwegian Trekking Associations trekking routes are passing the cabins. The mountain terrain is nice and varied for both child friendly trips and for hikes to the top of the mountains.

GAMMELSTUGGU

Cosy log cabin, 80m² located in the yard. The cabin is restored in 2021 and has living room with fireplace, sofa and a long table with benches, kitchen, 3 bedrooms (to room with family berth and one room with a little double bed).

SNIPPEN

Cosy log cabin, 45m² located approx. 250 m from the yard. The cabin has simple standard, living room with fireplace, sofa, long table, small kitchenette, and 2 bedrooms (one room with bunk bed and one room with two separate beds).

VEGVESENHYTTA

Cabin, 36 m², nearby Atndalsvegen approx. 500 m outside the yard. Living room with fireplace and sofa, kitchen with dining area, and 1 bedroom (with bunk bed and double bed).



Vegvesenhytta
© Arve Øyen



Stadsbuøyen



Gammelstuggu
© Arve Øyen



Snippen
© Arve Øyen

STADSBUØYEN HYTTEUTLEIE

Stadsbuøyen 36, 2580 Folldal

+47 917 89 627
post@stadsbuøyen.no
stadsbuøyen.no



PRICES

ACCOMMODATION

Per night

Gammelstuggu, incl. shower/toilet, washing machine and dishwasher	800
Snippen, w/electricity, no running water, outdoor toilet, shared sauna/shower in the yard	500
Vegvesenhytta, w/electricity, no running water, outdoor toilet, shared sauna/shower in the yard	400
Rental of linen set, 150	
Cleaning on departure, if required, 400	





© Rondane River Lodge / The Global Wizards



© Sigrid Storli Flatås



© Rondanevegen



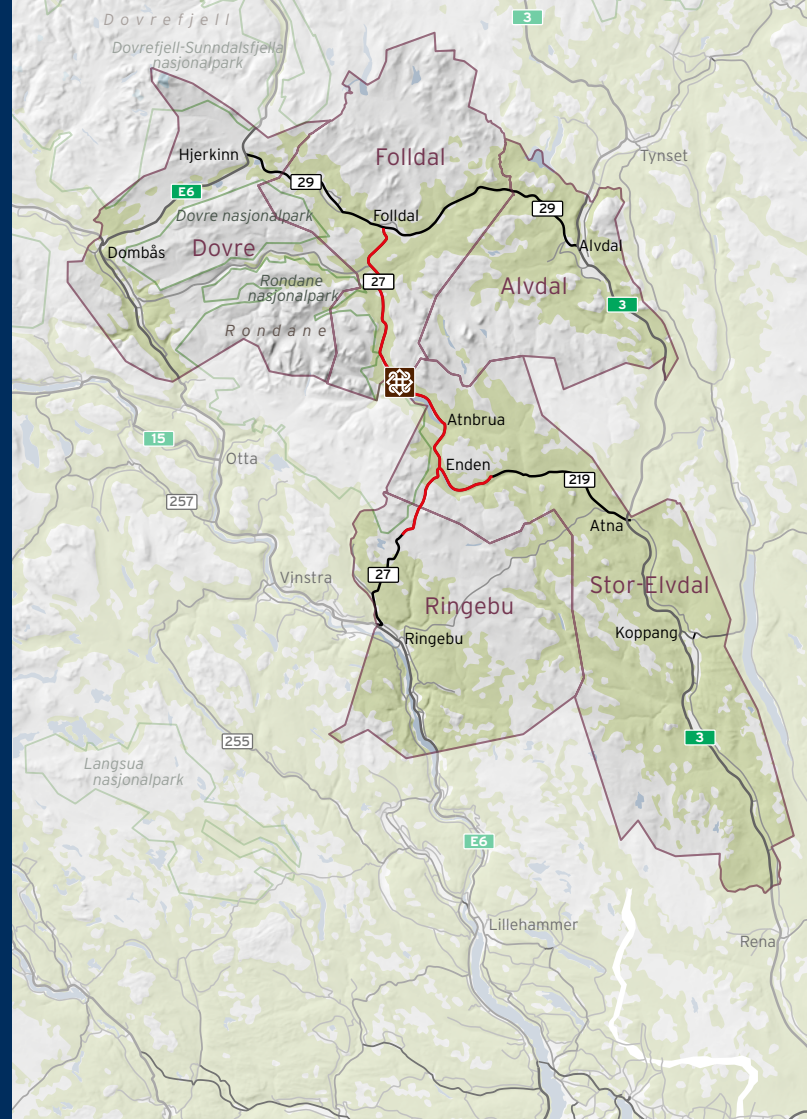
© Rondanevegen



© Rondanevegen



© Rondane River Lodge / The Global Wizards





© Stig Walter Nymoen



© Haldis M. Tvette



Ringeby Municipality

Ringeby is located in the heart of Gudbrandsdalen with beautiful nature, rich cultural environment and a living village.

The village of Ringeby has nice outdoor areas and a wide range of specialty shops, including Annis Pølsemakeri, which has harvested several gold medals for its sausages and meat products.

Every Saturday in July and August, there is organised market days in the village, and these days captivate both children and adults. The Village Gallery is an outdoor and full-year exhibition. On selected house walls in the centre you will find unique photographs from local photographers in Ringeby.

Ringeby Prestegard from 1743 is located in scenic surroundings just next to Ringeby Stave Church. The site consists of five protected buildings, beautifully located at the Stave Church near E6 south of Ringeby city centre. Ringeby Prestegard is open during the summer months and you can experience different types of exhibitions here.

RINGEBU MUNICIPALITY

Hanstadgata 4, 2630 Ringeby

+47 61 28 30 00
post@ringeby.kommune.no
Ringebu.kommune.no
Ringebu.com



Christianity was introduced in Norway around year 1000 and in the years after Christianity, nearly 1,000 stave churches were built during the Middle Ages until 1537. Ringeby Stave Church was built in 1220. It is one of 28 remaining Stave Churches in this country and one of the largest. Open for guided tours during the summer months. It is arranged summer concerts here during June and July.

Venabygdsfjellet along Rondanevegen (route 27) is an attractive mountain area with fantastic hiking terrain both summer and winter. It extends completely into Rondane National Park.

In the Kvitfjell ski resort on the west side of Gudbrandsdalen, there was a downhill and super-G under the Olympic Games in 1994. There are numerous alpine trails, ski slopes and marked hiking trails.

Friisvegen (route 385) between Atna and Ringeby is a great mountain transition with nice nature and great hiking range.

Visit Landsbyen Ringeby on Facebook!





Alvdal and Tronfjell (1666 meters above sea level)
© Ivar Thøresen/DMT Alvdal



Alvdal Municipality

Alvdal is a mountain village in Nord-Østerdalen approx. 30 miles north of Oslo and 20 miles south of Trondheim. Open and friendly scenery invites you to outdoor activities summer and winter.

The nature in Alvdal is varied and easy to walk. The highest point of the municipality is located at Sølnekletten 1827 metres above sea level. Right next to the mountain is Spis-skletten located. There are several summer farms in the area, and Breisjøseter is famous for its good food and nice atmosphere. Tronfjell is with its 1666 metres above sea level a towering landmark, with highway to the top in summer, outstanding views and diverse mountain flora.

South of the village Jutulhogget is located, as Northern Europe's largest canyon. Jutulhogget was designed over 10,000 years ago during the last ice age.

Thirty-seven miles north, slightly east and upward, you will discover Huset Aukrust, a beautiful museum building under the firmament. Family Park and museum with opportunities to meet Solan and Ludvig.

Kjell Aukrust grew up in Alvdal, and he has given his life work to his home village. At Steia, which is the municipality centre, Kjell Aukrust, Solan and Ludvig is sculptured by Nils Aas.

Livestock Festival with good music and nature experiences, is organized every year in July. For updates about the festival, look at Livestockfestivalen.no. People in all ages are recommended to go to Alvdal for good experiences during the festival period.

There are good connections to Oslo and Trondheim via route 3 through the village and west on route 29 through Follidal to Hjerlenn. Trains to Oslo Airport Gardermoen, Oslo and Trondheim (Rørosbanen). Daily bus services between Oslo and Trondheim.



ALVDAL MUNICIPALITY

Gjelen 3, 2560 Alvdal

+47 62 48 90 00
postmottak@alvdal.kommune.no
Alvdal.kommune.no
Opplevalvdal.no





Folldal Municipality



**Folldal
nasjonalpark-
kommune**

Folldal is located between Østerdalen and Dovrefjell. Magnificent and majestic nature provides rich opportunities for a varied outdoor life year-round.

Norway's highest municipality centre with its 712,5 metres above sea level is located in Folldal, and it has panorama view against Rondane.

In Folldal there are marked hiking trails and trails and approx. 150 km of skiing tracks. A great ski resort is found in Stormoeggja, while Krokthønna beautiful area for paddling, grilling, fishing and sand volleyball.

Folldal Gruver is one of 15 technical and industrial heritage sites in Norway. The main

attraction on the area is the mine. Join the mining train into Worms Hall and listen to the guides telling stories from mining.

Experience museums with exhibitions, marked trails, join guided tour of the mining area and take a walk at the Gruvekroa Café. Take an overnight stay at Directors Residence from 1910, Worm Lund.

The Norwegian Scenic Route Rondane is one of 18 selected routes, starting and stopping in Folldal. In addition to Folldal Mine, a stop is recommended at the view of Strømbu which offers a good view of the Rondane and Atna river. During the summer months there are rental of both canoes and bikes at Strømbu.

Close to the village there are pedestrian valleys. Several places offer both accommodation and a snack, which gives the experience of the mountain a little extra.

Parts of Rondane National Park and Dovre National Park are located in Folldal municipality. Rondane National Park was established as Norway's first national park in 1962, and Dovre National Park was established in 2003.



© Rondanevegen

FOLLDAL MUNICIPALITY

Gruvvegen 7, 2580 Folldal

+47 62 49 10 00
postmottak@folldal.kommune.no
Folldal.kommune.no
Visit-folldal.no





Stor-Elvdal Municipality

A rich cultural heritage and varied and magnificent nature makes Stor-Elvdal to an attractive destination.

Stor-Elvdal municipality is 13 mil long and has approx. 2500 inhabitants. In the administration centre in Koppang, you will find a good selection of shops, cafés and service institutions. Centrally located in Koppang you will also find the Norwegian Cultural Centre, with an large art collection and its own Fjord, Mountain and Travel Museum.

The mountain village Solli is furthest north and is the gateway to Rondane. This area is immortalized by Harald Sohlberg's picture "Winter Night in Rondane". Take a stop at Sohlbergplassen and enjoy the amazing view! At Atnavassdraget you can take both the big dried and paddle.

In Solli you will also find Stor-Elvdals highest mountain, Gravskardhøgda, 1767 metres above sea level. Top trips are a popular activity. If you like cycling, we can offer some of the country's finest mountain biking areas.

If you choose to travel along Glomma by canoe, kayak or boat, you will see the special Koppangs Islands, which is a unique river lakes landscape. Bjørnstjerne Bjørnson described this as "Norway's Rhindal".

The big moose at route 3 at Bjøråa Rasteplass is a very popular tourist attraction

that you must visit. The moose is 10 meters high and 12 meters tall, guarding the people on the road. At the rest area you can also get some snacks in the summer months.

Welcome to Stor-Elvdal - an eldorado for active life enjoyment!



Gravskardhøgda
© Siv Anita Gimse

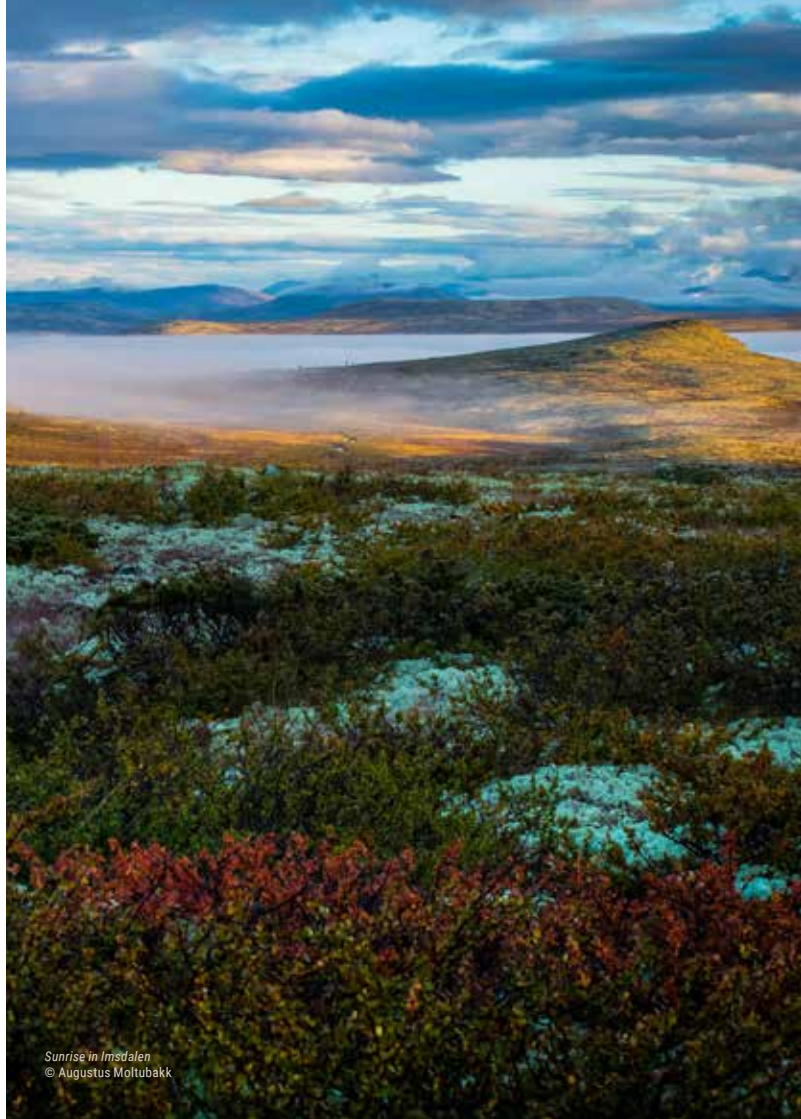


Storelgen / the big moose
© Stor-Elvdal Municipality

STOR-ELVDAL MUNICIPALITY

Storgata 120, 2480 Koppang

+47 62 46 46 00
postmottak@stor-elvdal.kommune.no
Stor-elvdal.kommune.no



Sunrise in Imsdalen
© Augustus Moltubakk



Dovre Municipality



Dovre - your starting point for nature experiences in the National Park! Dovre municipality is located in Innlandet county and has approx. 2600 inhabitants. The municipality is known for a rich plant and animal life, and the musk ox is depicted in the municipal weapon.

Dovre has a climate with low rainfall, cold winters and relatively cool summers, due to the municipality's height above sea level. There are significant differences between day and night temperatures in the summer months. To the north and east there are great mountain ranges including the northwest part of Rondane and the southern part of Dovrefjell. Foksturnyra, northeast of Dombås, is known for its rich bird life and was fully protected already in 1923. There are also populations of wild herb, mountain reef and wolverine in the municipality.

Dombås combines route E6 and E136 and the railway lines Dovrebanen and Raumabanen. Dombås thus connects Eastern Norway with Vestlandet and Trøndelag, both by road and rail.

Dovre municipality wants to encourage people to use the nature and to enjoy it. This applies to our rich mountain areas, but not least, it also applies natural adjacent to the main valley and in/around our villages. and Dovre. A trip to Dovre makes you experience the uncrowded, magical and worthy of protection - the real things! One attractive viewpoint is among others. viewpoint SNØHETTA on Hjerkin, and there are many great hiking and activity opportunities based on different pla-

ces in Dovre municipality. The new hiking and biking trail at Dovrefjell was opened in 2017. You can now cycle around the entire Dovrefjell Plateau ("Tour de Dovre") - from Dombås to Hjerkin, further towards Folldal, through Grimsdalen and back to Dovre/Dombås. A fantastic mountain bike ride.

In Dovre you will experience the untouched, magical and veritable - the real!



Berit Fiksdahl

DOVRE MUNICIPALITY

Kongsvegen 4, 2662 Dovre

+47 61 24 21 00
postmottak@dovre.kommune.no
Dovre.kommune.no



© Anders Olsen



**Welcome to Rondanevegen and
Norwegian Scenic Route Rondane!**

**Our ATM machine in Folldal is open
24/7 all year around.**

**You'll find us right in the centre in
the municipality building.**

**TOLGA
OS SPARE
BANK**

+47 62 49 61 00

post@tos.no

www.tos.no

 **FrendeForsikring**

OS • TOLGA • TYNSET • FOLLDAL • ELVERUM